

# THE GLOBAL ALLIANCE FOR CARE AT THE WOMEN DELIVER 2026 CONFERENCE

Care Pavilion and Agenda of Events  
Co-organized by Alliance members

26 April – 1 May 2026  
Narrm/Melbourne, Australia



**Global  
Alliance  
for Care**

# THE GLOBAL ALLIANCE FOR CARE AT THE WOMEN DELIVER 2026 CONFERENCE

## Care Pavilion and Agenda of Events Co-organized by Alliance members

26 April – 1 May 2026 | Narm/Melbourne, Australia

### What is the Women Deliver Conference, and why is it important?

The [Women Deliver Conference](#) is more than a convening—it is a global rallying point for feminist solidarity, resistance, and reimagination. For nearly 20 years, it has served as a platform for advancing gender equality and driving collective action at scale, bringing together diverse actors across sectors and regions to shape shared agendas and influence global policy processes. Women Deliver, a member of the Global Alliance for Care, convenes this space as part of its broader mission to advance bodily autonomy and gender justice.

Since its first conference in London in 2007, which brought together more than 2,000 people from 115 countries to elevate maternal and newborn health on the global agenda, Women

Deliver has grown significantly. The most recent conference, held in Kigali in 2023, convened 6,300 in-person participants and more than 200,000 online participants, reflecting its expanding reach and influence. Today, it stands as one of the largest multi-sectoral convenings dedicated to gender equality, with a strong emphasis on intersectionality, inclusion, and movement-building.

Global convenings like Women Deliver create critical spaces for those often excluded from decision-making to access visibility, shape agendas, and build networks. They are forums where policies are debated, norms are challenged, and commitments are made, helping to bridge local realities with global advocacy efforts.

Participants—including advocates, policymakers, technical experts, funders, and movement leaders—come together to address pressing

issues, challenge dominant narratives, and co-create solutions. The conference is also a key platform for youth engagement, amplifying the voices and leadership of young people, and for strengthening collective action to advance health, rights, and justice.

Women Deliver fosters collaboration across movements, regions, and generations to advance gender equality and bodily autonomy. It is committed not only to reflecting feminist and anti-racist values, but to actively dismantling the systems that oppress girls, women, and gender-diverse people.

At its core, Women Deliver's mission is to protect and promote bodily autonomy, particularly in relation to sexual and reproductive health and rights (SRHR). It recognizes that gender equality cannot be achieved without the freedom to make decisions about one's own body, sexuality, and health.

Care is a central yet often overlooked pillar of this agenda. The ability to exercise bodily autonomy and participate fully in society depends on access to care and on the fair recognition and redistribution of care work. From health systems to social protection and community support networks, care underpins the outcomes that Women Deliver seeks to advance.

For the first time, the Women Deliver 2026 Conference (WD2026) will take place in the Pacific region, centering the leadership, knowledge, and resistance of feminists, activists, and First Nations leaders across Oceania—a region at the forefront of climate justice, gender equality, and decolonization.

The WD2026 [programme](#) brings together advocates, policymakers, researchers, funders, and movement leaders from around the world to exchange ideas, strengthen partnerships, and drive collective action for gender equality. In a context of increasing backlash against gender equality, the conference will serve as a space for strategy, solidarity, and renewal. It will also be a defining moment for shaping the gender equality agenda beyond 2030. The strategies and alliances forged here will help drive feminist action in the decade ahead.

Against this backdrop, members of the Global Alliance for Care—including Women Deliver—are

engaging through coordinated advocacy, events, and communications efforts to ensure that care is recognized as a human right, a public good, and a shared social responsibility.

The Care Pavilion builds on this momentum by creating a dedicated space to centre care within these global conversations and translate commitments into collective action.

## The Care Pavilion of the Global Alliance for Care

*A space for reflection and collective action within the framework of the Women Deliver 2026 Conference*

From 26 April to 1 May 2026, the Global Alliance for **Care will host the Care Pavilion in Narm/Melbourne alongside the Women Deliver 2026 Conference.** The Pavilion is an innovative and unique initiative of the Alliance, building on previous editions in major global policy spaces to expand dialogue on care beyond traditional conference settings.

Supported by the City of Melbourne, the International Development Research Centre

(IDRC), and Fondation CHANEL, and in collaboration with CHANGE, Equimundo, and Women Deliver; the Pavilion—hosted at the Multicultural Hub—serves as a dynamic, city-based space connecting global advocacy with local action. It will convene policymakers, civil society, feminist movements, and community groups to advance discussions on care, gender equality, and inclusive development.

Through a diverse [programme](#) of panels, workshops, artistic expressions, and interactive activities, the Pavilion will foster dialogue, learning, and collaboration. Designed as an open and accessible space, it will welcome both conference participants and the broader public, while showcasing local initiatives from Melbourne, across Australia, and around the world.

The Care Pavilion also serves as a hub for the Global Alliance for Care's collective engagement at Women Deliver, amplifying member-led initiatives and strengthening connections across movements and sectors.

Explore the agenda below to discover care-related events led by Alliance members, both within the Women Deliver Conference and at the [Care Pavilion](#).

# WD2026 Official Events



Global  
Alliance  
for Care

This agenda is accurate as of 17 April 2026. Programme details are subject to change. All times are in AEST (*Australian Eastern Standard Time*).

## Official WD2026 Events

### MONDAY, 27 APRIL 2026

9.00 a.m.–1.00 p.m. (AEST)

**MenCare Cities: Engaging Men in Care and Violence Prevention Through Urban Design and Care Infrastructure** (*invitation only*)

Organized by: Equimundo: Center for Masculinities and Social Justice\* and City Hub and Network for Gender Equity (CHANGE)\*

📍 **Melbourne Convention and Exhibition Centre Meeting Room 209**

**Language:** Interpretation will be available in English, French, and Spanish

(accreditation required)

4.00–5.30 p.m. (AEST)

**Change Calls Us Here: Opening of the Women Deliver 2026 Conference**

Organized by: Women Deliver\*

📍 **Melbourne Convention and Exhibition Centre, Plenary Hall**

**Language:** Interpretation will be available in English, French, and Spanish

(accreditation required)

### TUESDAY, 28 APRIL 2026

9.30–11.00 a.m. (AEST)

**Developing a Strategic Roadmap for Economic Justice Across Global Policy Moments**

Organized by: Economic Justice and Rights (EJR) Working Group, with the participation of the Global Alliance for Care

📍 **Melbourne Convention and Exhibition Centre Meeting Room 216**

**Language:** Interpretation will be available in English, French, and Spanish

(accreditation required)

12.00–1.30 p.m. (AEST)

**Reimagining Diverse Care Infrastructures for Just and Feminist Futures**

Organized by: Women Deliver\*

📍 **Melbourne Convention and Exhibition Centre Meeting Room 211**

(accreditation required)

### WEDNESDAY, 29 APRIL 2026

9.30–11.00 a.m. (AEST)

**Self-care, Burnout, and Managing Stress in Youth Advocacy**

📍 **Melbourne Convention and Exhibition Centre Youth Zone**

**Language:** Interpretation will be available in English, French, and Spanish

(accreditation required)

\*Member of the Global Alliance for Care



12.00–1.30 p.m. (AEST)

**Care as the Bridge: Evidence, Solidarity, and Cross-Movement Power for Systemic Change**

Organized by: International Development Research Centre (IDRC)\*, with the support of Oxfam Canada\* and the Global Alliance for Care

📍 **Melbourne Convention and Exhibition Centre Meeting Room 208**

**Language:** Interpretation will be available in English, French, and Spanish

(accreditation required)

12.00–1.30 p.m. (AEST)

**Inside the Circle: Community-Based Mental Health Care for Women and Girls—An Immersive Experience**

📍 **Melbourne Convention and Exhibition Centre Meeting Room 212**

**Language:** Interpretation will be available in English, French, and Spanish

(accreditation required)

12.00–1.30 p.m. (AEST)

**Who Cares About Climate and Gender? Centering Care in Gender-Transformative Climate Action**

📍 **Melbourne Convention and Exhibition Centre Meeting Room 217**

**Language:** Interpretation will be available in English, French, and Spanish

(accreditation required)

4.00–5.30 p.m. (AEST)

**Building Economies that Deliver: Care, Public Services, and Shared Prosperity**

Organized by: WD2026 Economic Justice and Rights Working Group

📍 **Melbourne Convention and Exhibition Centre Plenary Hall**

**Language:** Interpretation will be available in English, French, and Spanish

(accreditation required)

## THURSDAY, 30 APRIL 2026

9.30–11.00 a.m. (AEST)

**Women's Collective Action and Leadership to Build Community-Led Care Economies in Agriculture**

Organized by: Kore Global, Self-Employed Women's Association (SEWA)—Lok Swasthya Seva Trust, and the International Development Research Centre (IDRC)\*

📍 **Melbourne Convention and Exhibition Centre Meeting Room 212**

(accreditation required)

2.30–4.00 p.m. (AEST)

**The Future Calls Us Here: Women Deliver 2026 Closing Ceremony**

📍 **Melbourne Convention and Exhibition Centre Plenary Hall**

**Language:** Interpretation will be available in English, French, and Spanish

(accreditation required)

# Care Pavilion Events



Global  
Alliance  
for Care

## Care Pavilion Events

### SUNDAY, 26 APRIL 2026

The Care Pavilion will open its doors on Sunday, 26 April 2026. We invite you to visit and explore the photographic exhibitions presented by the Alliance's membership in Melbourne.

### MONDAY, 27 APRIL 2026

9.00–10.00 a.m. (AEST)

**The Future is Care: A Participatory Foresight Workshop on Inclusive and Resilient Care Systems**

Organized by: Economic and Social Commission for Asia and the Pacific (ESCAP)\*

📍 **Care Pavilion (Drill Hall):** Melbourne Multicultural Hub, 506 Elizabeth St, Melbourne VIC 3000, Australia

Language: English

Concept Note [here](#)

11.00 a.m.–12.30 p.m. (AEST)

**Care and Support: Challenges and Opportunities for an Inclusive Gender and Disability Agenda**

Organized by: Women Enabled International\*, Center for Inclusive Policy\*, Disability Rights Fund\*, and Inclusion International\*

📍 **Care Pavilion (Drill Hall):** Melbourne Multicultural Hub, 506 Elizabeth St, Melbourne VIC 3000, Australia

Language: English

Concept Note [here](#)

1.00–2.00 p.m. (AEST)

**Invisible to Investable: Making Care Work Count in Urban Economies**

Organized by: Wow Mom Kenya\*

📍 **Care Pavilion (Drill Hall):** Melbourne Multicultural Hub, 506 Elizabeth St, Melbourne VIC 3000, Australia

Language: English

Concept Note [here](#)

### TUESDAY, 28 APRIL 2026

9.00–10.30 a.m. (AEST)

**Care is Political: What Feminist Funders See from the Ground Up**

Organized by: Fondo Semillas\*, Fondo de Mujeres del Sur, Urgent Action Fund – Latin America and the Caribbean, and MADRE

📍 **Care Pavilion (Drill Hall):** Melbourne Multicultural Hub, 506 Elizabeth St, Melbourne VIC 3000, Australia

Language: English–Spanish interpretation available

Concept Note [here](#)

11.00 a.m.–12.00 p.m. (AEST)

**Care as Survival: Feminist Insights from Conflict-Affected Contexts in the SWANA Region**

Organized by: Asfari Institute\*

📍 **Care Pavilion (Drill Hall):** Melbourne Multicultural Hub, 506 Elizabeth St, Melbourne VIC 3000, Australia

Language: English

Concept Note [here](#)

5.30–6.30 p.m. (AEST)

**The Role of the Private Sector as Co-Responsible for Care**

Organized by: International Development Research Centre (IDRC)\*, International Center for Research on Women (ICRW)\*, and Uni Global Union\*

📍 **Care Pavilion (Drill Hall):** Melbourne Multicultural Hub, 506 Elizabeth St, Melbourne VIC 3000, Australia

**Language:** English

**Concept Note** [here](#)

6.30–7.15 p.m. (AEST)

**Indigenous Approaches to Care: Insights from Latin America, Canada and Asia-Pacific**

Organized by: International Development Research Centre (IDRC)\*, International Center for Research on Women (ICRW)\*, and Grupo de Análisis para el Desarrollo (GRADE)\*

📍 **Care Pavilion (Drill Hall):** Melbourne Multicultural Hub, 506 Elizabeth St, Melbourne VIC 3000, Australia

**Language:** English

**Concept Note** [here](#)

7.15–9.00 p.m. (AEST)

**Reception and Cultural Event**

Organized by: International Development Research Centre (IDRC)\*, International Center for Research on Women (ICRW)\*, and Grupo de Análisis para el Desarrollo (GRADE)\*

📍 **Care Pavilion (Drill Hall):** Melbourne Multicultural Hub, 506 Elizabeth St, Melbourne VIC 3000, Australia

**WEDNESDAY, 29 APRIL 2026**

8.00–10.00 a.m. (AEST)

**Putting Care at the Center of Transportation: From Blind Spots to Better Design-Participatory Workshop and Neighborhood Audit**

Organized by: International Development Research Centre (IDRC)\* and City Hub and Network for Gender Equity (CHANGE)\*, with the support of the Global Alliance for Care

📍 **Care Pavilion (Drill Hall):** Melbourne Multicultural Hub, 506 Elizabeth St, Melbourne VIC 3000, Australia

**Language:** English

**Concept Note** [here](#)

10.00–11.00 a.m. (AEST)

**The Future of Care: Big Data and AI in Care Systems**

Organized by: International Center for Research on Women (ICRW)\*, Uni Global Union\*, and United Workers Union - Australia

📍 **Care Pavilion (Drill Hall):** Melbourne Multicultural Hub, 506 Elizabeth St, Melbourne VIC 3000, Australia

**Language:** English

**Concept Note** [here](#)

2.00–3.30 p.m. (AEST)

**Access to Care for Elderly Women Across Contexts**

Organized by: Fundación para Estudio e Investigación de la Mujer (FEIM)\*, in collaboration with Chirapq and W20

📍 **Care Pavilion (Drill Hall):** Melbourne Multicultural Hub, 506 Elizabeth St, Melbourne VIC 3000, Australia

**Language:** English-Spanish interpretation available

**Concept Note** [here](#)

**THURSDAY, 30 APRIL 2026**

8.30–10.00 a.m. (AEST)

**From Commitments to Change: Advancing the Care Economy through the G20**

Organized by: Women20, Center for Global Development\*, and other partners

📍 **Care Pavilion (Drill Hall):** Melbourne Multicultural Hub, 506 Elizabeth St, Melbourne VIC 3000, Australia

**Language:** English

**Concept Note** [here](#)

11.00 a.m.–12.30 p.m. (AEST)

**Presenting the State of the World's Fathers Report 2026**

Organized by: Equimundo: Center for Masculinities and Social Justice\*

📍 **Care Pavilion (Drill Hall):** Melbourne Multicultural Hub, 506 Elizabeth St, Melbourne VIC 3000, Australia

**Language:** English

**Concept Note** [here](#)

1.00–2.30 p.m. (AEST)

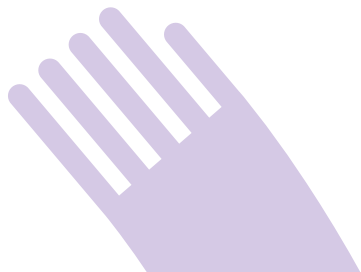
**Using Evidence to Build Gender-Equitable Care Systems**

Organized by: J-PAL Global\*

📍 **Care Pavilion (Drill Hall):** Melbourne Multicultural Hub, 506 Elizabeth St, Melbourne VIC 3000, Australia

**Language:** English

**Concept Note** [here](#)



**5.00–8.00 p.m. (AEST)****Care at the Center of Climate Action: A Collective Journey for Resilient and Just Futures**

Organized by: International Development Research Centre (IDRC)\*, United Nations Development Programme (UNDP)\*, Procomum\*, Climate and Care Initiative\*, AVINA\*, WEDO\*, Oxfam Canada\*, CHANGE\*, the Care and Climate Catalyst Asia Program, and Follow Taxes\* in collaboration with the Global Alliance for Care

**Care Pavilion (Drill Hall):** Melbourne Multicultural Hub, 506 Elizabeth St, Melbourne VIC 3000, Australia

**Language:** English–Spanish interpretation available

**Concept Note** [here](#)

**8.00–9.00 p.m. (AEST)****Official closing of the GAC Care Pavilion**

**Care Pavilion (Drill Hall):** Melbourne Multicultural Hub, 506 Elizabeth St, Melbourne VIC 3000, Australia

\*Member of the Global Alliance for Care

**FRIDAY, 1 MAY 2026****9.00–10.30 a.m. (AEST)****Membership Breakfast: Global Alliance for Care (invitation only)**

**Organized by:** Global Alliance for Care Technical Secretariat  
The GAC Breakfast is a strategic gathering of Alliance members during key multilateral moments—an opportunity to connect, align, and sharpen our collective approach.

**Care Pavilion (Drill Hall):** Melbourne Multicultural Hub, 506 Elizabeth St, Melbourne VIC 3000, Australia

**10.30 a.m.–1.00 p.m. (AEST)****Strategy Session**

**Organized by:** Global Alliance for Care Technical Secretariat

As the conference draws to a close, join us at the Care Pavilion for a focused and energizing session to chart the road ahead. The WD2026 Strategy Session will build on momentum from recent global advocacy spaces—such as Commission on the Status of Women—and look ahead to key regional and international milestones in 2026.

This session will provide a space for Alliance members and partners to synthesize key outcomes, align on collective priorities, and co-develop strategic next steps. It is not just a wrap-up—it is a launchpad for coordinated action in the months ahead.

**Care Pavilion (Drill Hall):** Melbourne Multicultural Hub, 506 Elizabeth St, Melbourne VIC 3000, Australia

**Exhibitions** →



# Exhibitions

26 APRIL – 1 MAY 2026

Several members of the Global Alliance for Care will showcase projects, research, and artistic approaches that explore care from diverse perspectives. These exhibitions reflect the breadth of the Alliance's work and create additional entry points for dialogue beyond formal sessions.

The Global Alliance for Care will also feature exhibition spaces across both the Women Deliver 2026 Conference venue, at the Melbourne Convention and Exhibition Centre, and the Care Pavilion, helping to connect and strengthen conversations between the two sites and extend engagement with broader audiences.



Global  
Alliance  
for Care

## Caring Through Climate: Frontline Practices for a Just Transition

**Organized by:** Climate & Care Initiative\*

This photographic exhibition brings together organizations supported by the Climate & Care Initiative working at the intersection of climate action and care across Latin America and Sub-Saharan Africa. Through images and testimonies, it offers a grounded view into how communities are responding to the climate crisis while sustaining life, territories, and collective wellbeing.

📍 **Care Pavilion (Drill Hall):** Melbourne Multicultural Hub, 506 Elizabeth St, Melbourne VIC 3000, Australia

## El cuidado también es territorio (Care is also territory)

**Organized by:** Grupo Autónomo para la Investigación Ambiental A.C. (Gaia)

The exhibition brings together photographs portraying everyday ways of inhabiting and sustaining the land. Each plot holds memory, knowledge, and decision-making capacity. Practices such as diversifying crops, conserving ecosystems, nurturing soil fertility, and saving seeds sustain food systems, livelihoods, and continuity in territories already impacted by climate change. These efforts reflect the possibility of continuing to cultivate, nourish communities, and preserve the conditions that make life viable.

📍 **Care Pavilion (Drill Hall):** Melbourne Multicultural Hub, 506 Elizabeth St, Melbourne VIC 3000, Australia

## Padres Padrísimos (Awesome Dads)

**Organized by:** Cómplices por la Igualdad, MenEngage-México, and the Swedish Embassy in México

This exhibition seeks to spark a conversation about the role of men in building more just and equitable societies. Recognizing and redistributing care work is essential to advancing gender equality – and toward building new masculinities grounded in empathy and shared responsibility.

📍 **Care Pavilion (Drill Hall):** Melbourne Multicultural Hub, 506 Elizabeth St, Melbourne VIC 3000, Australia

## Cuarteles, Calles y Cuidados (Barracks, Streets, and Care)

**Organized by:** Friedrich Ebert Stiftung (México), the Mexican Network for Feminist Foreign Policy, and Monash University

This fanzine is based on research conducted by Daniela Phillipson García (Monash University) for her doctoral thesis on the effects of militarization on everyday violence against women in México. It draws on 70 interviews with shelter staff, women's search groups, and Indigenous women in Guanajuato and the Yucatán Peninsula—regions deeply affected by military presence.

📍 **Care Pavilion (Drill Hall):** Melbourne Multicultural Hub, 506 Elizabeth St, Melbourne VIC 3000, Australia

## Care Outlives Place: Territory and Care Across Four Generations

**Organized by:** ARTRA-Ecuador\* (Art and Social Transformation Foundation)

*Care Outlives Place* is a practice-based artistic inquiry by mother and daughter Maite Galarza-Neira and Toa Galarza, with image editing collaboration by the Ecuadorian cinematographer Sebastián Sánchez. Through photography and poetic text, the exhibition traces how care travels across generations, territories, and family histories.

📍 **Care Pavilion (Drill Hall):** Melbourne Multicultural Hub, 506 Elizabeth St, Melbourne VIC 3000, Australia

## Tejiendo cuidados (Weaving Care)

**Organized by:** Grupo de Análisis para el Desarrollo (GRADE)

The images featured in this exhibition are part of an illustrated booklet created within the framework of the research project "Tejiendo Cuidados" (Weaving Care). This project aimed at recognizing the vital contributions of ethnic women to the care of life and territory across Colombia. These illustrations compile the voices, reflections, and ancestral knowledge shared during regional gatherings in the Andean, Caribbean, Pacific, and Amazonian regions in Colombia.

📍 **Care Pavilion (Drill Hall):** Melbourne Multicultural Hub, 506 Elizabeth St, Melbourne VIC 3000, Australia

## PRACTICAL INFORMATION



### Care Pavilion Location

#### Melbourne Multicultural Hub

506 Elizabeth Street  
Narm (Melbourne), VIC 3000, Australia

## OPENING HOURS (PUBLIC ACCESS)

The Care Pavilion is open to both conference participants and the general public during the following times:



<b>Sunday, 26 April:</b>	8.00 a.m. – 6.00 p.m.
<b>Monday, 27 April:</b>	8.00 a.m. – 6.00 p.m.
<b>Tuesday, 28 April:</b>	8.00 a.m. – 9.00 p.m.
<b>Wednesday, 29 April:</b>	8.00 a.m. – 6.00 p.m.
<b>Thursday, 30 April:</b>	8.00 a.m. – 9.00 p.m.
<b>Friday, 1 May:</b>	9.00 a.m. – 6.00 p.m.

The Care Pavilion is designed as an open and welcoming space—drop in throughout the week to engage, connect, and explore.

## HOW TO GET THERE

The Care Pavilion is located in central Melbourne and is easily accessible by public transport:



**Tram:** Several tram lines run along Elizabeth Street and nearby Swanston Street.



**Train:** The Pavilion is within walking distance of Melbourne Central Station and Flagstaff Station.



**On foot:** Approximately 15–20 minutes from the Melbourne Convention and Exhibition Centre.

Participants attending the Women Deliver Conference are encouraged to walk or use public transport to move between the Convention Centre and the Care Pavilion.

Public transport across Victoria is free from 31 March to 31 May 2026. This includes trains, trams, and buses across Melbourne.

With the support of:



CITY OF MELBOURNE



International Development Research Centre  
Centre de recherches pour le développement international

Canada

## FONDATION CHANEL

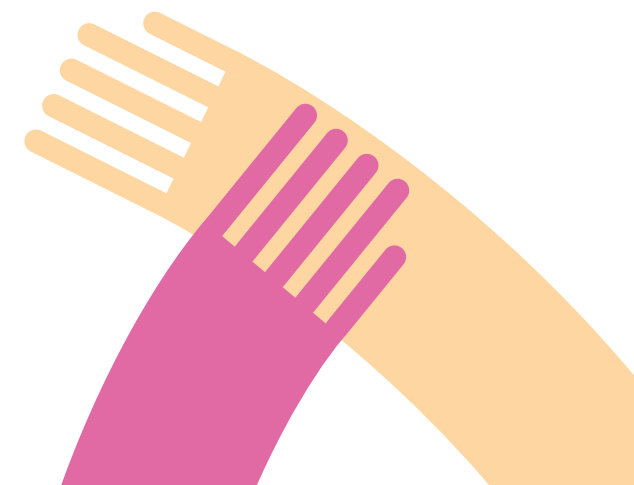
In collaboration with:

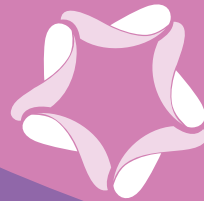


CITY HUB AND NETWORK FOR GENDER EQUITY



CENTRE FOR  
MASCULINITIES  
& SOCIAL JUSTICE





# Global Alliance for Care



Visit our Website

[www.globalallianceforcare.org](http://www.globalallianceforcare.org)

## Follow us

@globalallianceforcare 

@globalallianceforcare 

@GlobalAllianceForCare 

@GAllianceCare 

@GlobalAllianceforCareOfficial 